

HUWA REPAIR CLAMP TYPE HUWA-QS

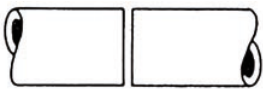
pipeline products for water, gas and industrial applications

HUWA stainless steel repair clamps style HUWA-QS are used for permanent repairs of broken and damaged pipes

for water, gas and petrochemical fluids



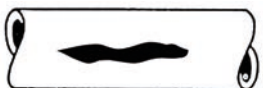
Following types of damage can be repaired:



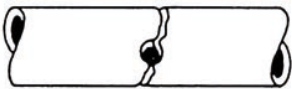
Pipe longitudinal connection



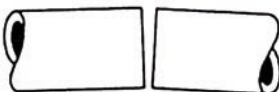
Damage due to broken pipes



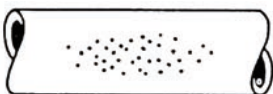
Longitudinal crack



Cracked pipe after hot tap



Misaligned pipes



Pit holes

The clamps can be used to repair the following pipe types:

- Ductile Iron (DI)
- Cast Iron (CI)
- Steel (St.)
- Asbestos Cement (AC)
- PE coated steel
- PVC*
- GRP*
- PE*

* *If pipe repair clamps are to be used on plastic pipes, please always contact HUWA or a HUWA distributor for more information regarding the application and restrictions on these pipe types.*

HUWA repair clamps should be used under following conditions:

- For PVC pipes, the width of the clamps should be 50 % longer and bolt torque should be reduced by 50 %. We prefer that you consult your HUWA distributor.
- The maximum allowable distance between two pipe ends should not exceed 10 mm.
- The maximum allowable deflection is 2 degrees.
- The maximum allowable offset should not exceed 3 mm.

The HUWA-QS repair clamp is in fact a small version of the HUWA-10 repair clamp, having a range of max. 4 mm. The clamp is used on pipes for which HUWA-10 clamps are not available due to the small pipe diameter.

HUWA-QS is available for pipe nominal diameters 1/2" up to 2".

Available length 75, 100 and 150 mm

Material specification:

- All metal parts: stainless steel AISI 304.
- Metal parts have been deburred and are passivated to restore the corrosion resistance to its original state after the welding process.
- Single band (one section) with a working range of max. 4 mm. For an overview of all working ranges please see our price-list.
- Standard certified rubber gaskets EPDM or NBR. The rubber is tapered and has a waffle pattern.
- Seamless rubber lining for every clamp diameter.
- Bridge plate is vulcanized into the rubber gasket.
- U-shaped lifter bar.
- Stainless steel, electrolytic zinc plated nuts to prevent galling.
- Stainless steel washers.
- No loose parts that may get lost during installation.
- No special tools required: a simple wrench will do the job.
- Special tape is used to fix the rubber gasket to the stainless steel band. This tape is flexible and reinforced with glass fibre thread to withstand hot and humid conditions and guarantee a long storage capability.
- Under most circumstances the clamps can be installed without releasing the pressure on the pipe.
- The clamps are packed into strong double-rib cartons. For export overseas we use strong, seaworthy crates



The vulcanized bridge plate guarantees a leakproof sealing

Available sizes:

HUWA-QS clamps are available in several different working ranges from 19–23 to 60–64. Please consult our price-list for more details on the working ranges. Available lengths: 75, 100 and 150 mm.

Pressure ratings:

Pressure ratings for water ** depend on the type of break or damage, pipe OD, medium etc. In general, HUWA-QS clamps can resist a working pressure of 16 bars.

*** Please contact HUWA or your distributor for more information regarding pressures on gas pipes.*

Available rubber gaskets:

HUWA-QS clamps can be supplied with the following types of rubber:

EPDM	- potable water - waste water	max 60 degr. C.
NBR	- natural gas - potable water - waste water	max 70 degr. C.

Our rubber gaskets are certified to European standards, such as ACS (France) and WRAS (UK). Please contact us for a detailed list of current certifications.